

Attachment 4

OHS Outcomes and Attitudes in Victoria

Summary

Victoria has achieved:

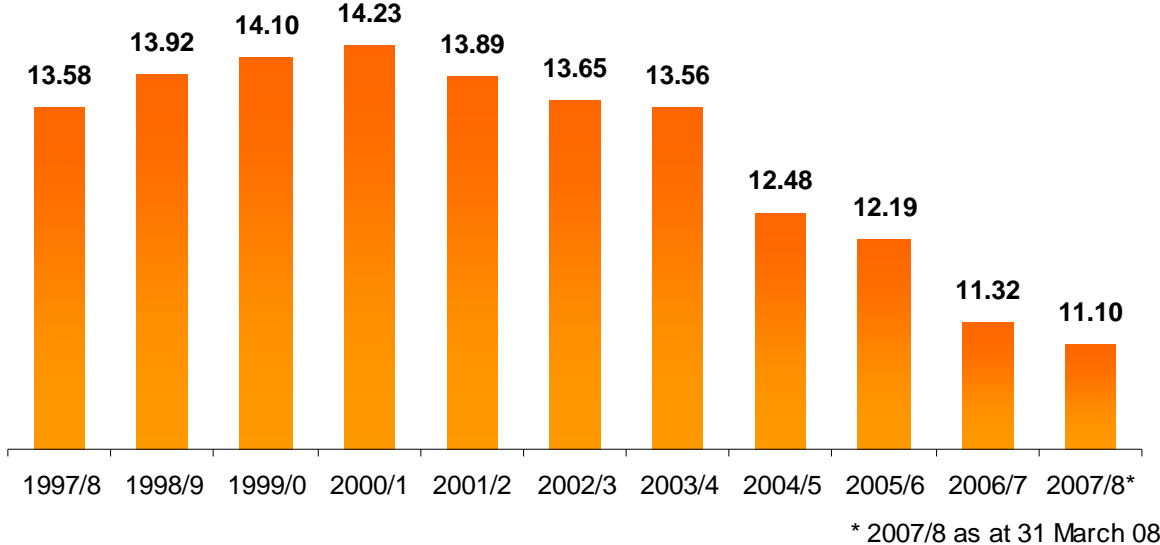
- 18.5% reduction in all claims per 1,000 (01-2 to 06-7)
- 15.6% reduction in work related hospitalised injuries (02-3 to 06-7)
- 34% reduction in premium rate (03-4 to 06-7)
- Saved over \$2 billion in actuarial estimations since 02-3
- cumulative saving to Victorian employers of almost \$3B in premium payments over past 5 years

Victoria, in comparison to all other Australian jurisdictions:

- Lowest claims rate since 2000
- Lowest hospitalisation rate
- Lowest injuries – based on ABS survey
- Second largest reduction and rate in compensated fatalities
- Highest satisfaction with Inspectorate from Stakeholders
- Highest number of inspections
- Largest premium rate reduction since 2003-04

Victoria has seen a marked turn around in the performance of the scheme

Victoria - Claims per 1,000 Persons Employed



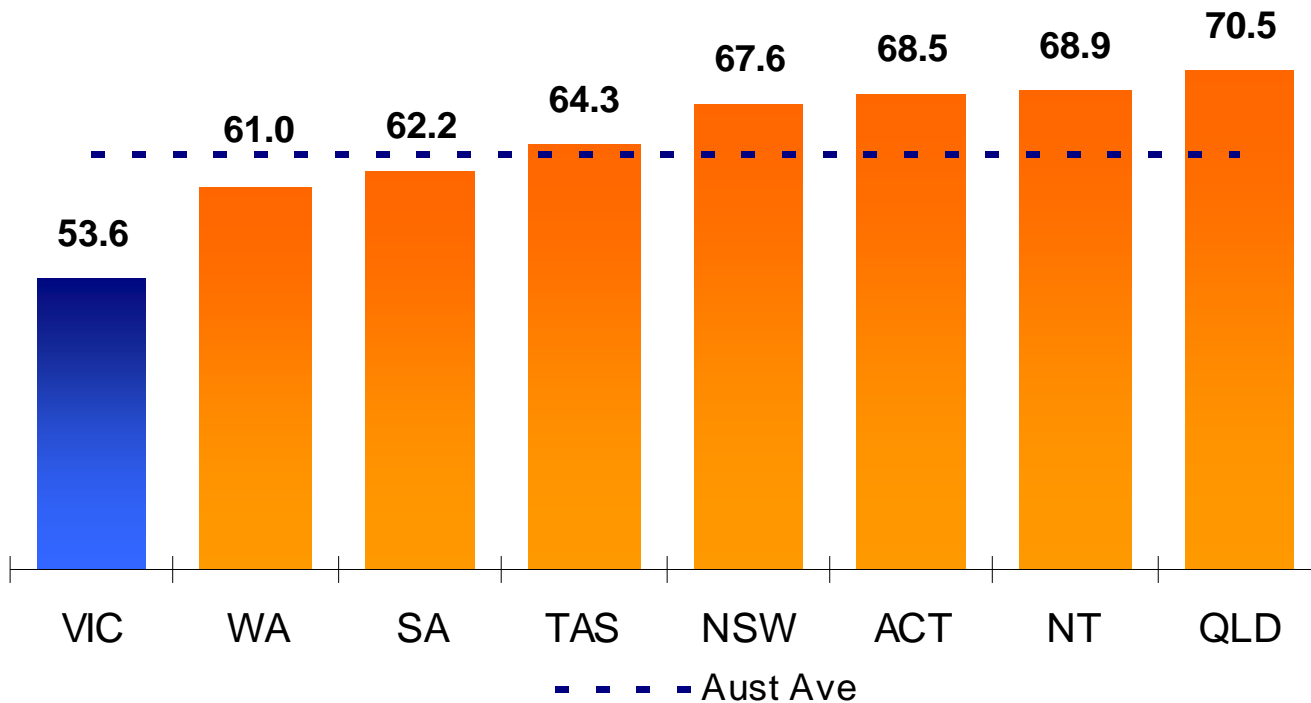
CLAIMS PER 1,000

In line with the 20% reduction as per National Strategy 2012 (from 01-2 to 06-7), Victoria achieved a reduction of 18.5%.

SERIOUS INJURIES

From 2002-03 to 2006-07, the rate of work related hospitalisations in Victoria has fallen by 15.6%.

Victoria has the lowest level of work related injuries

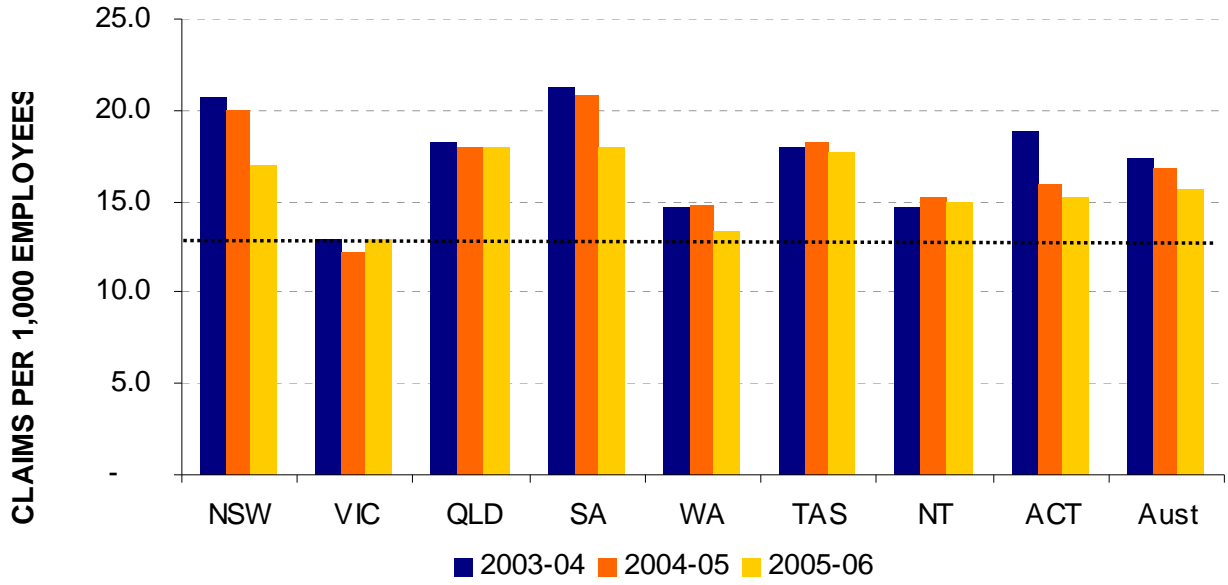


THE REAL PICTURE

Victoria's injury rate was 12% lower compared to WA (the next lowest) and more than 20% better than NSW and QLD.

SOURCE: ABS CAT. NO. 6234.0 WORK RELATED SURVEY, DECEMBER 2006.

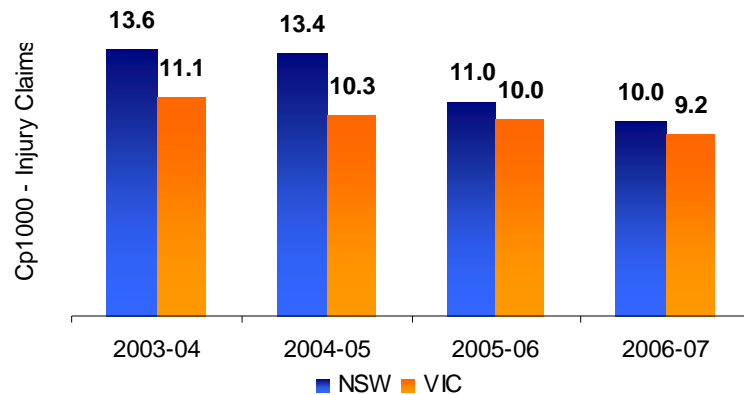
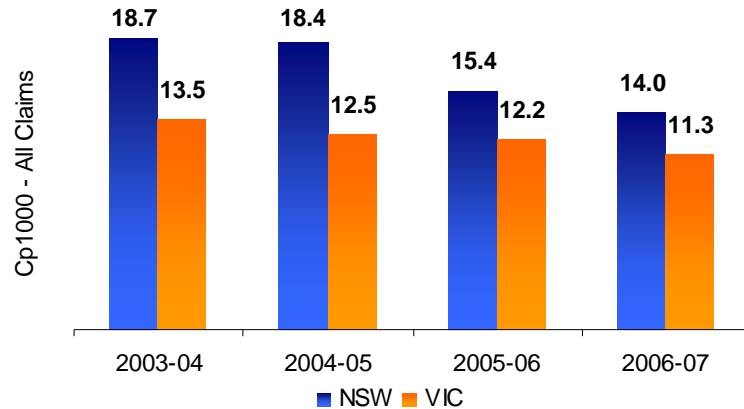
Victoria consistently has the lowest claims rates



LOWEST RATE
Victoria has consistently had the lowest claims rate. Victoria's claims rate is 17% below the national average and more than 27% lower than QLD, TAS and SA.

SOURCE: COMPARITIVE PERFORMANCE MONITORING, 9TH EDITION, ASCC APRIL 2008
Note that standardisation applies to Victorian rates based on NSW claims criteria

Victoria also has the lowest real rate of claims



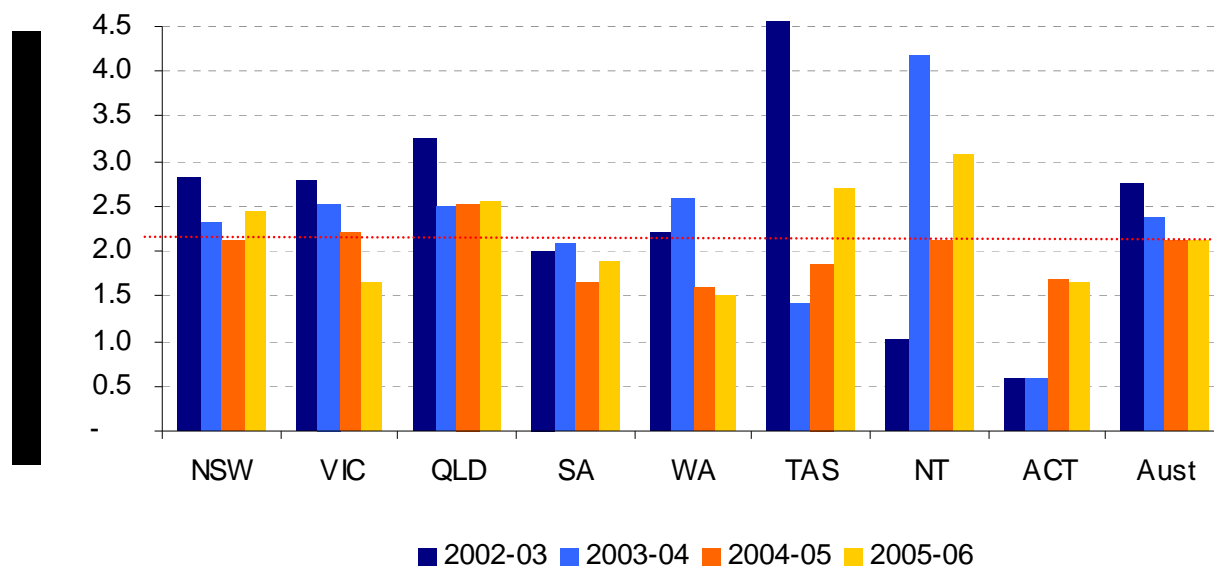
APPLES WITH APPLES

Whilst NSW reports to have the lowest rate of claims, this is based only on injuries and a comparison of Victorian cp1000. Excluded from the claims total are diseases and illnesses.

The top chart shows all claims, with the bottom chart showing rate of injury claims only in NSW and Victoria.

SOURCE: NSW WorkCover, Statistical Bulletin 2003-04, 2004-05, 2005-06 AND 2006-07.

Victoria has achieved a 40%+ reduction in fatalities since 2002/03



FATALITIES WELL DOWN

Apart from Tasmania, the reduction in Victoria from 2002-03 to 2005-06 has been more than 40%.

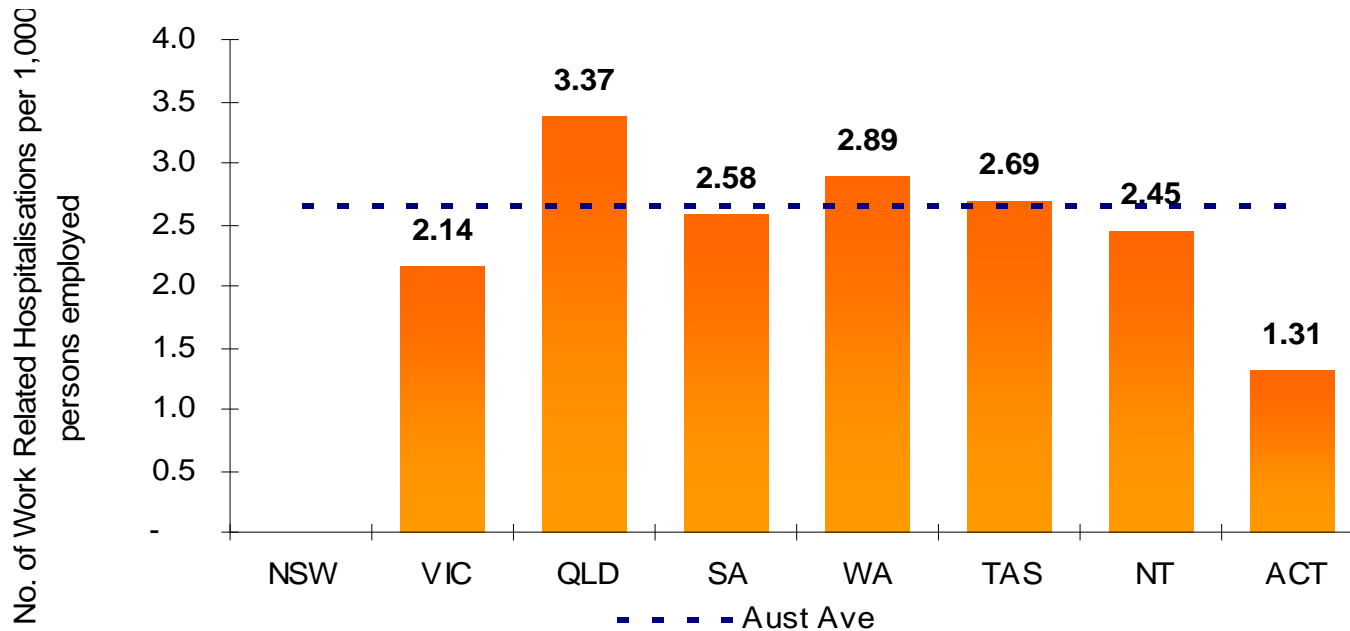
% Reduction from 2002-03 to 2005-6

TAS	-51%
VIC	-41%
WA	-31%
QLD	-22%
NSW	-14%
SA	-5%
ACT	189%
NT	206%

FATALITIES SOURCE:
EMPLOYMENT SOURCE:

COMPARITIVE PERFORMANCE MONITORING, 9TH EDITION, ASSC APRIL 20
ABS CAT. NO. 6291.0.55.003 LABOUR FORCE QUARTERLY, FEB 2008

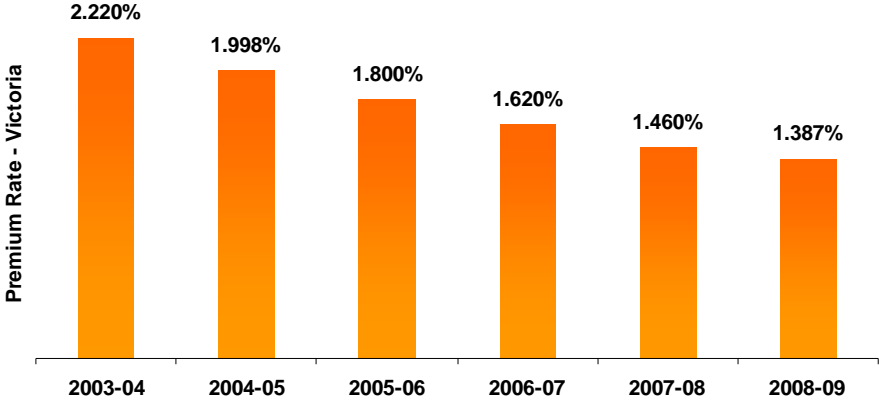
Work related hospitalisations are amongst lowest in Australia



SERIOUS INJURIES
Aside from ACT, serious injuries resulting in hospitalisation in Victoria are the lowest in Australia.

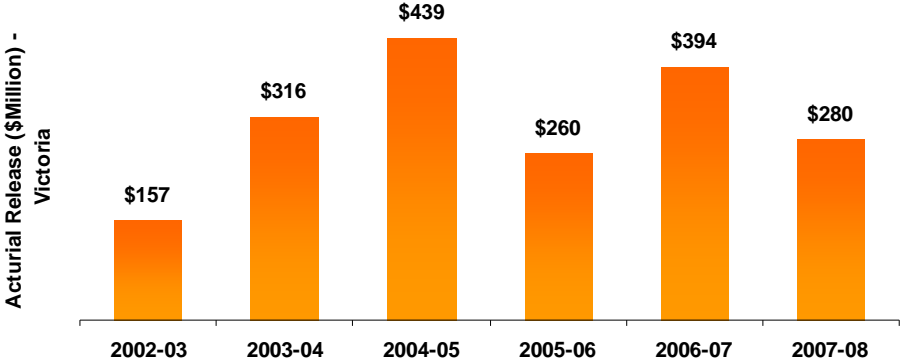
SOURCE: HOSPITALISATIONS DUE TO WORK RELATED INJURY 2000-01, ASCC FEB 2004
*NSW does not publish hospitalisation data

This has enabled Victoria to deliver 5 consecutive premium reductions to Victorian employers



PREMIUM

Premium rate in Victoria has fallen from 2.22% to just 1.46 since 2003-04. This represents a reduction of 34%.

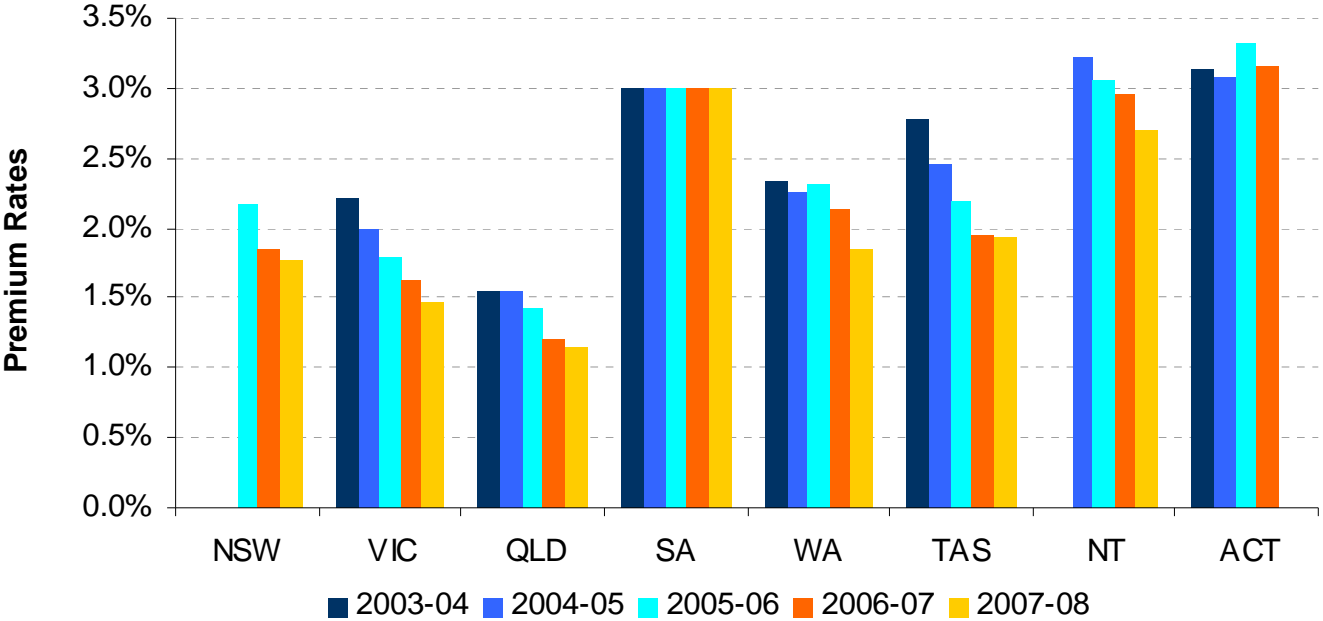


ACTUARIAL ESTIMATION

Since 2002-03, actuarial estimation has shown savings of more than \$2 billion.

Note: 2007-08 is half year results

Victoria's premium is now the second lowest in the country

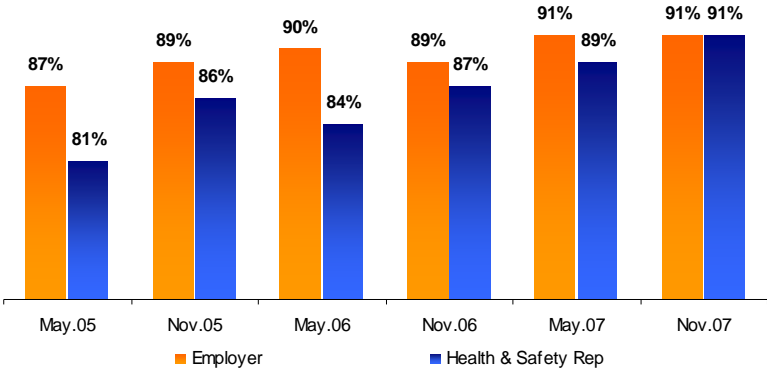


BIGGEST REDUCTION
Although Victoria has the second lowest premium rate behind Queensland, Victoria has achieved the highest reduction since 2003-04.

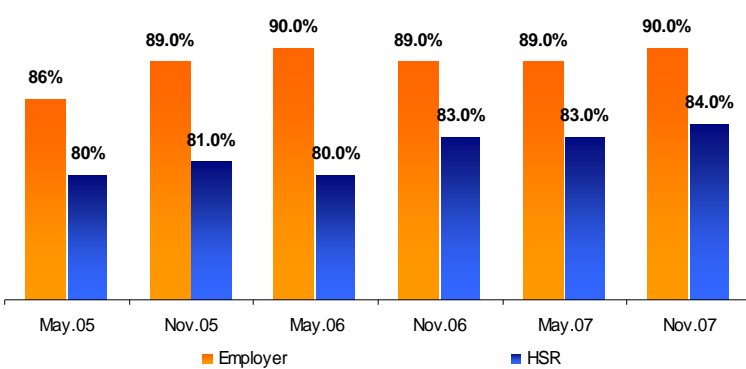
SOURCE: COMPARITIVE PERFORMANCE MONITORING, 9TH EDITION, ASCC APRIL 2008

Employers and HSRs express high levels of satisfaction with WorkSafe's Inspectorate and the advice and guidance they provide

Are you satisfied with our inspectorate?

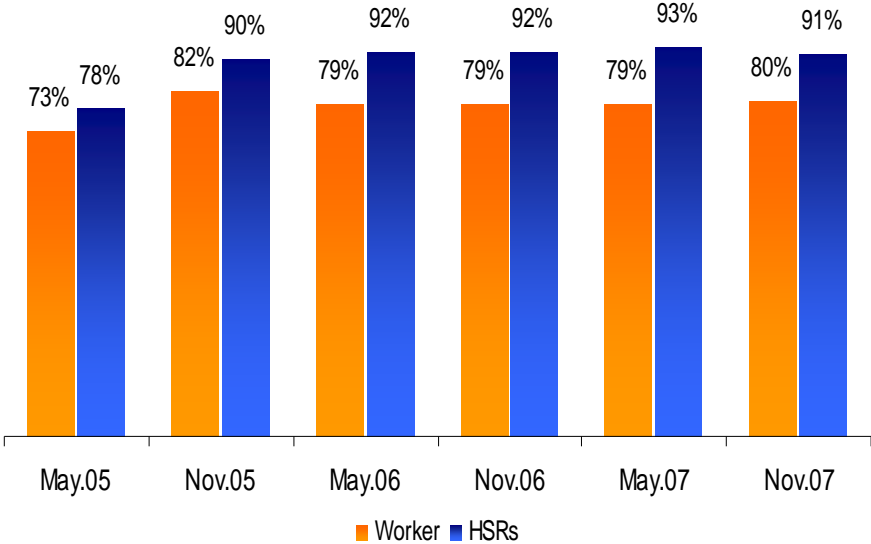


Are you satisfied with our advice / guidance?

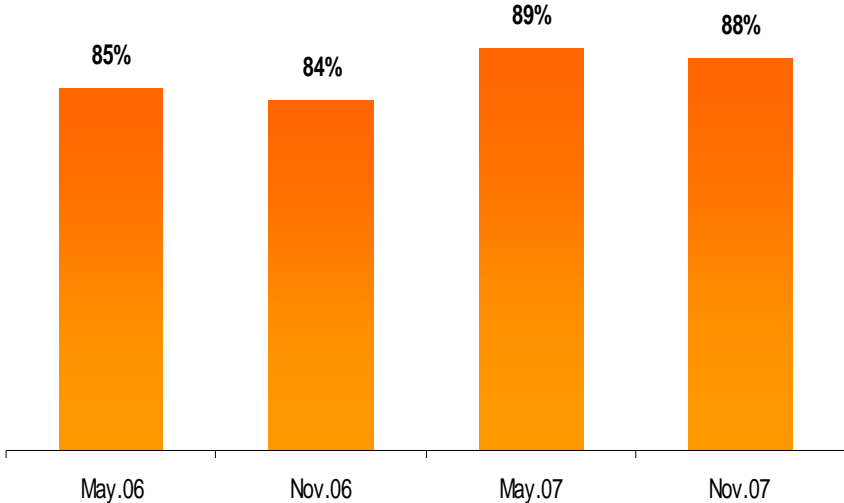


People's knowledge of what to do is high and improving

Are you talking safety at work?

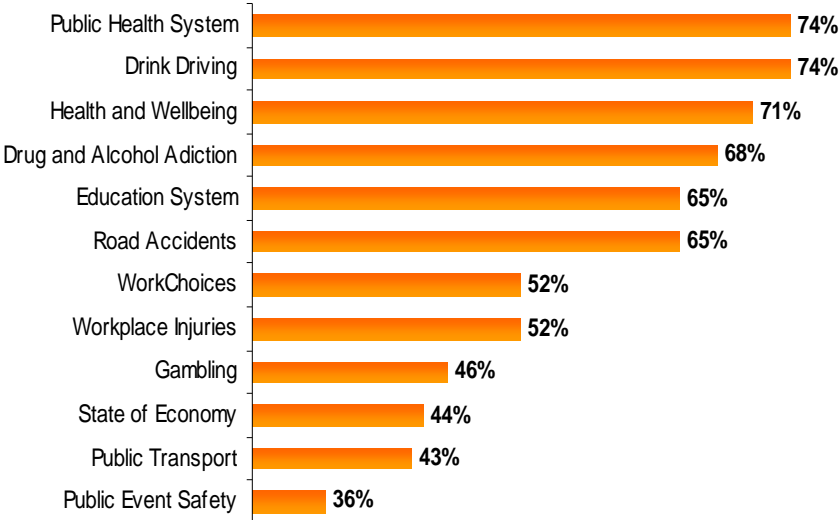


Inspectors Helped You To Understand How To Comply With OHS Laws

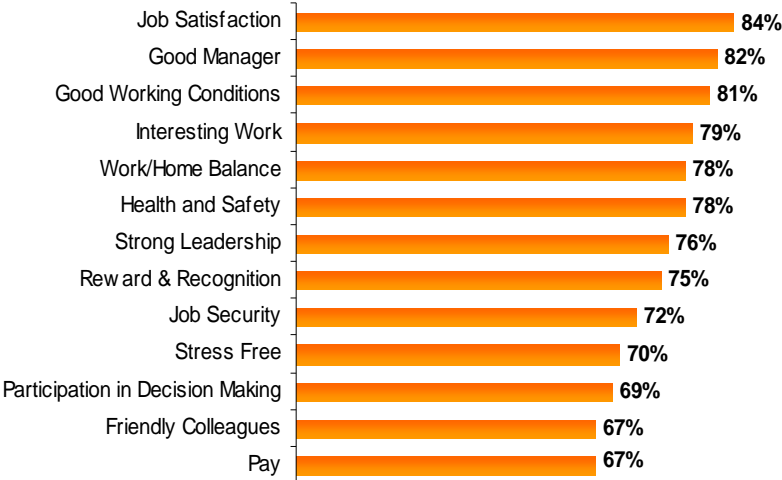


Workplace safety is an important issue for the community

Issues Concerning Victorians

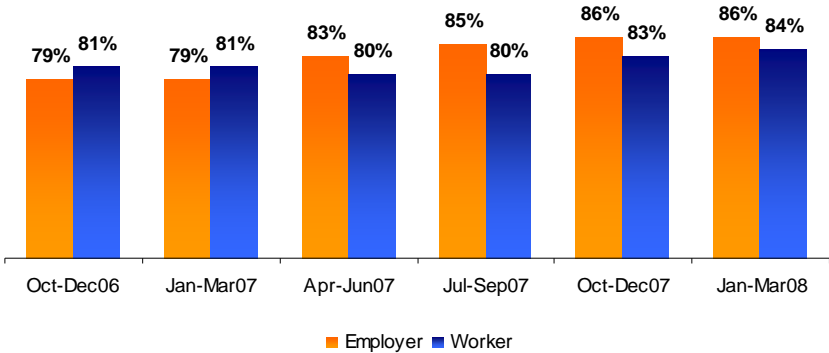


Importance In Working Life

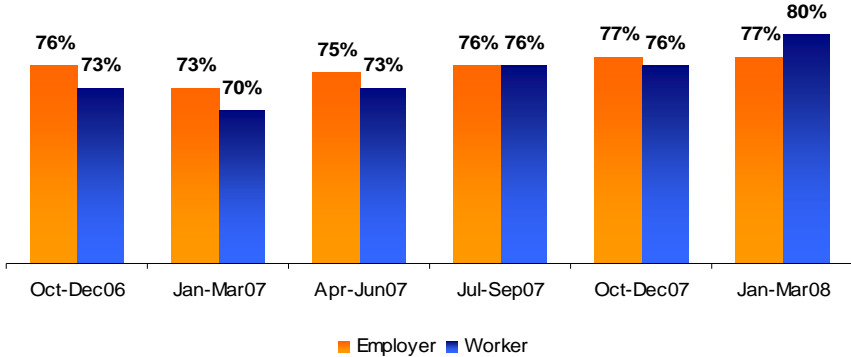


Community values and trusts WorkSafe's contribution

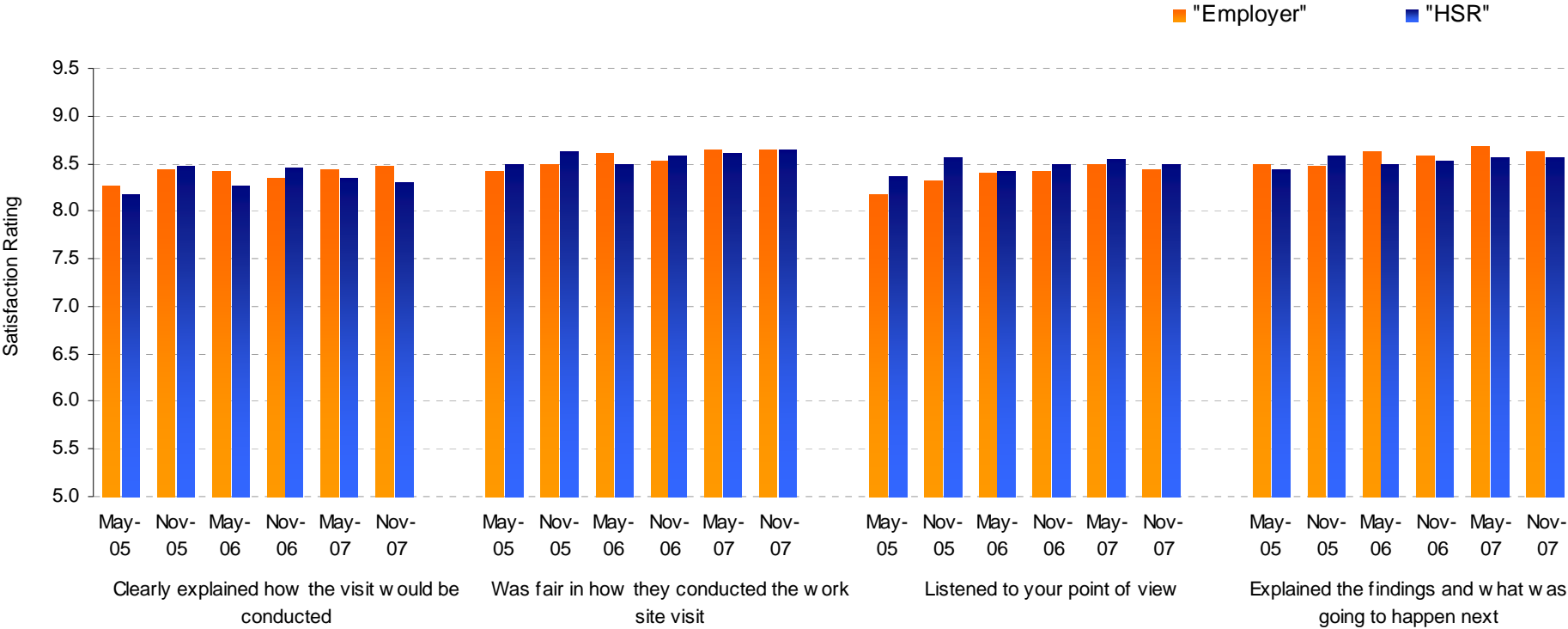
WorkSafe is an effective regulator



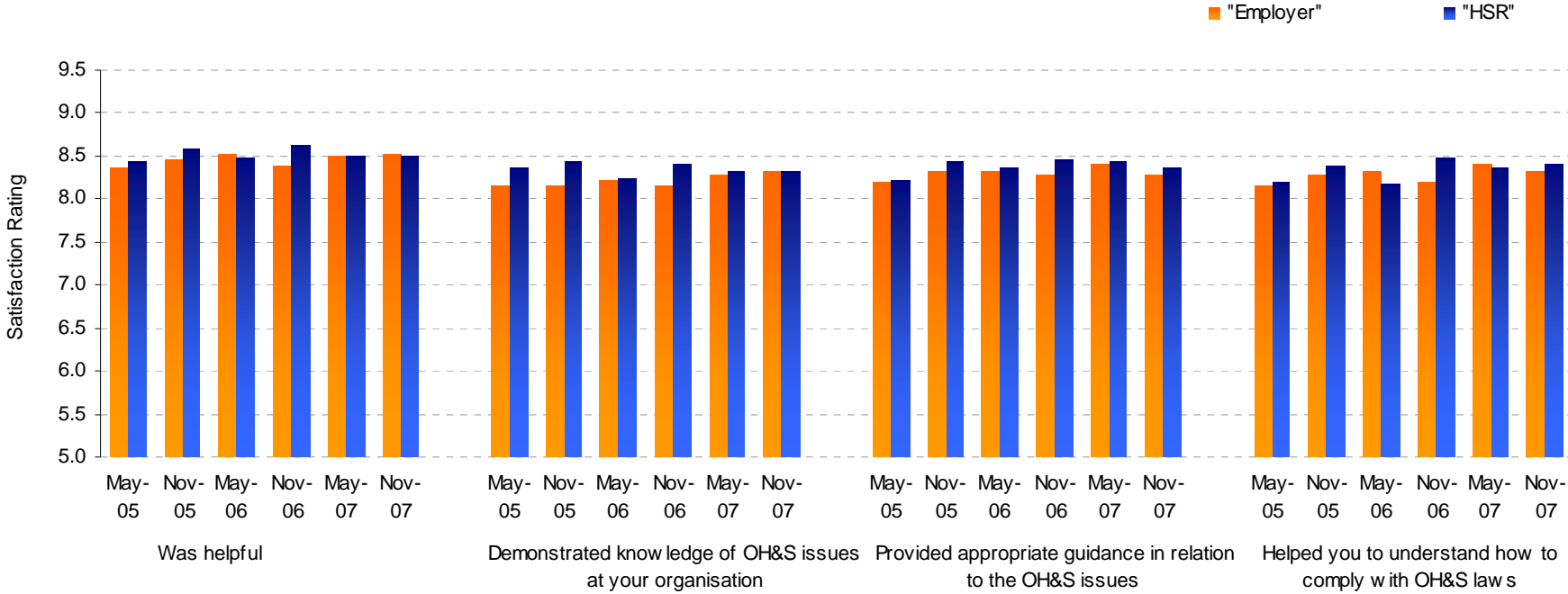
WorkSafe is trusted by Victorians



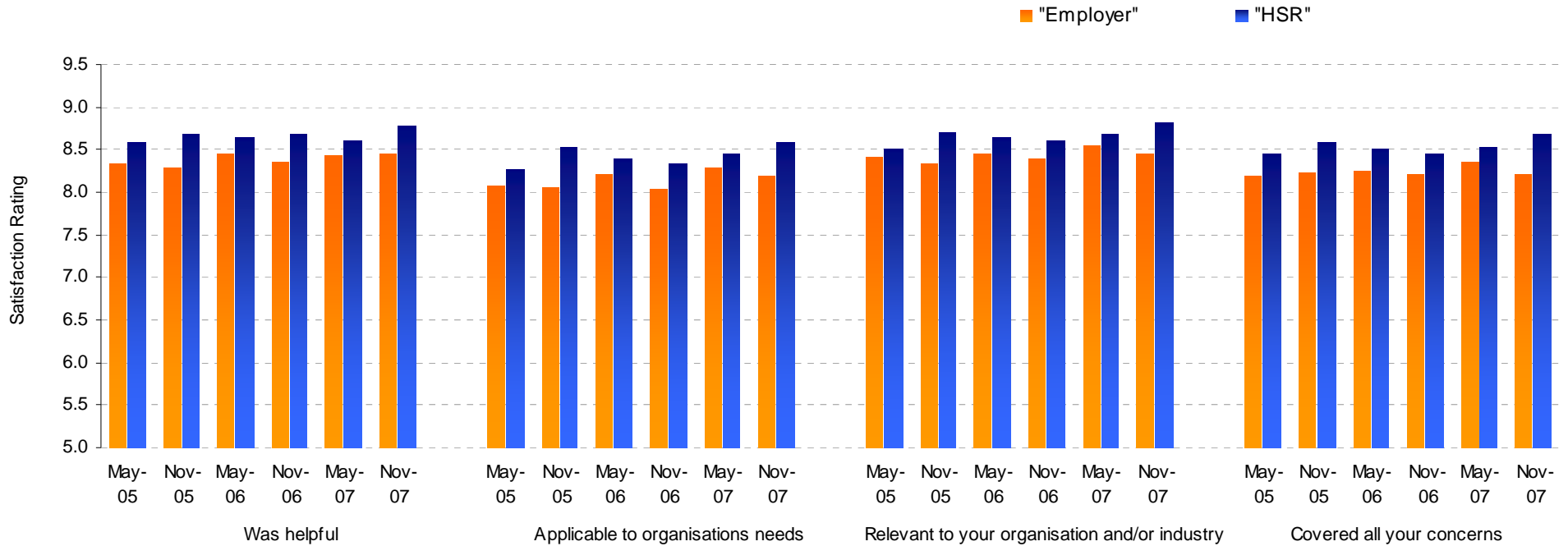
WorkSafe Inspectors are fairer and more transparent



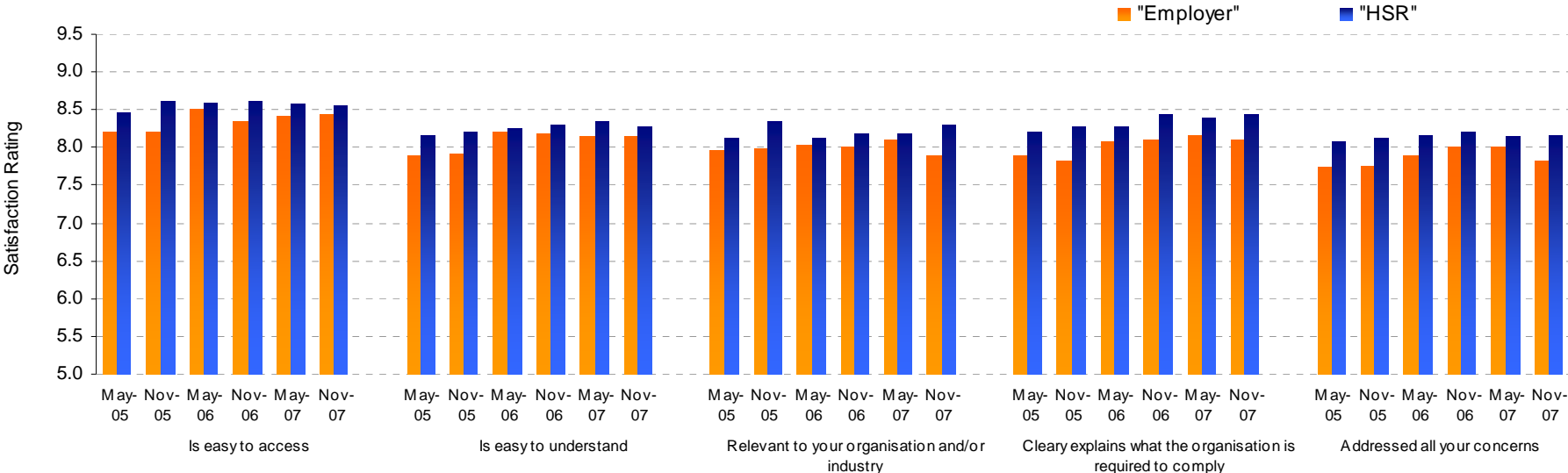
WorkSafe Inspectors are regarded more positively



WorkSafe inspectors are providing helpful, relevant advice

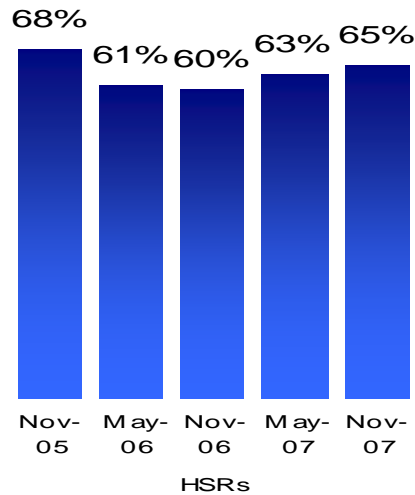
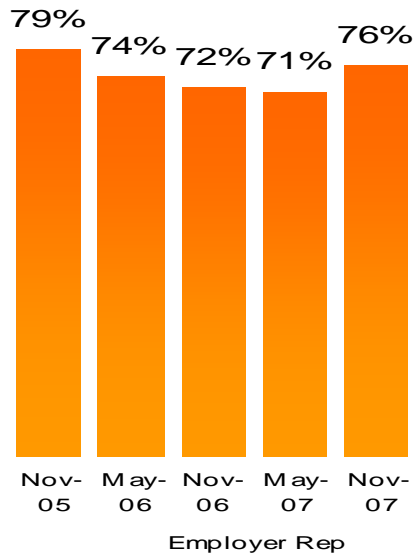


WorkSafe is producing OHS Guidance which is easier to access and understand

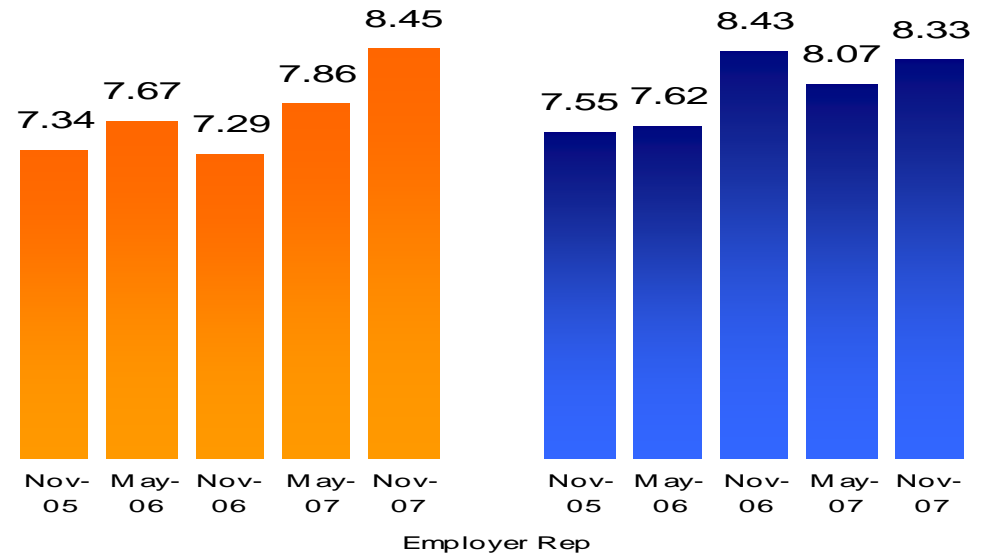


Better awareness of rights of internal review and understanding of how it works

Are you aware of the Internal Review process?



Satisfaction – Understanding How Internal Review Works



More employers making proactive changes

